

## Product information

Xtreme is a modern crepe weave fabric made from 100% recycled polyester, diverting waste from landfill and saving virgin raw materials. Its stretch properties, coupled with inherent flame resistance, durability and non-pilling properties make Xtreme an ever popular fabric for task seating.

Xtreme is certified to the EU Ecolabel.



UK/16/005

## Technical information

### UK

#### Composition

100% Recycled Flame Retardant Polyester.  
Non metallic dyestuffs.

#### Environmental

Made from 100% recycled polyester.  
Certified to the EU Ecolabel.

#### Width

140cm minimum

#### Weight

310g/m2 ±5% (435g/lin.m ±5%)

#### \*Abrasion Resistance

10 year guarantee / 100,000 Martindale cycles (full details available)

#### Flammability

BS EN 1021 - 1:2006 (cigarette)  
BS EN 1021 - 2:2006 (match)  
BS 7176:2007 Low Hazard  
BS 5852:2006 Section 4 Ignition Source 5  
BS 7176:2007 Medium Hazard  
DIN 4102 B1  
NF - P - 92 - 507 M1  
UNI 8456 & UNI 9174 Classe 1  
*Note: Flammability performance is dependent on foam used.*

#### \*Light Fastness

6 (ISO 105 - B02:2013)

#### \*Fastness to Rubbing

Wet: 4, Dry: 4 (ISO 105 - X12:2002)

#### Cleaning

Washable to 60°C. Wipe clean with a damp cloth or shampoo using proprietary upholstery shampoo.

\* Tested in accordance with BS EN 14465. Please note that seam performance is dependent on seam construction and needle and thread type. We recommend that appropriate sewing advice be taken.

**Note:** Batch to batch variations in shade may occur within commercial tolerances. We reserve the right to alter technical specifications without notice. The Unregistered Design Rights and the Copyright in all designs are the exclusive property of Camira Fabrics Limited.

### Contact

UK Head Office: +44 (0)1924 490491

Germany: +49 7031 60 84 30

Scandinavia: +45 32 55 20 01

France/Benelux: +32 56 227 266

USA: +1 317 484 0305

China: + 86 (0) 21 6133 1812

[www.camirafabrics.com](http://www.camirafabrics.com)



THE QUEEN'S AWARD  
FOR ENTERPRISE  
SUSTAINABLE DEVELOPMENT  
2005

### F

#### Zusammensetzung

100% Recycliertes schwerentflammbares Polyester.  
Nicht schwermetallhaltige Farbstoffe.

#### Umweltfreundlich

Hergestellt aus 100% recycelten Polyester.  
Nach Zertifikat EU Ecolabel.

#### Breite

140cm nutzbare Breite

#### Gewicht

310g/m2 ±5% (435g/ftd.M ±5%)

#### \*Scheuerfestigkeit

10 Jahre Garantie / 100,000 Martindale Scheuertouren (Details auf Anfrage)

#### Fuersicherung

BS EN 1021 - 1:2006 (Zigarettestest)  
BS EN 1021 - 2:2006 (Streichholztest)  
BS 7176:2007 Low Hazard  
BS 5852:2006 Section 4 Ignition Source 5  
BS 7176:2007 Medium Hazard  
DIN 4102 B1  
NF - P - 92 - 507 M1  
UNI 8456 & UNI 9174 Classe 1  
*Bemerkung: Schwerentflammbarkeit hängt von verwendetem Schaum ab*

#### \*Lichtechtheit

6 (ISO 105 - B02:2013)

#### \*Reibechtheit

Nass: 4, Trocken: 4 (ISO 105 - X12:2002)

#### Reinigung

Waschbar bis 60°C. Regelmässig staubsaugen. Dazu mit einem feuchten Tuch abwischen, oder mit einem speziellen Polsterschaum behandeln.

\* Wurde nach BS EN 14465 getestet. Eine optimale Nahtausreisfestigkeit hängt von der Nahtfähe, der verwendeten Nadel und dem Näh-Garn ab. Wir empfehlen daher Nähversuche durchzuführen.

**Wichtig:** Handelsübliche Farbabweichungen können auftreten und berechtigen nicht zur Reklamation. Wir behalten uns die Änderung technischer Spezifikationen vor. Die registrierten und nicht registrierten Urheberrechte der Dessinierungen sind ausschliessliches Eigentum der Camira Fabrics Limited.

### ES

#### Composició

100% Resistente al fuego Poliéster Reciclado.  
Tintes no metálicos.

#### Ambiental

Hecho de 100% de poliéster reciclado.  
Certificado con EU Flower.

#### Ancho

140cm mínimo

#### Peso

310g/m2 ±5% (435g/lin.m ±5%)

#### \*Resistencia a la abrasión

Garantía de uso 10 años / 100,000 Martindale ciclos (más información disponible bajo consulta)

#### Inflamabilidad

BS EN 1021 - 1:2006 (cigarillo)  
BS EN 1021 - 2:2006 (cerilla)  
BS 7176:2007 Low Hazard  
BS 5852:2006 Section 4 Ignition Source 5  
BS 7176:2007 Medium Hazard  
DIN 4102 B1  
NF - P - 92 - 507 M1  
UNI 8456 & UNI 9174 Classe 1  
*Condiciones ignifugas dependientes del tipo de foam utilizado.*

#### \*Solidez a la luz

6 (ISO 105 - B02:2013)

#### \*Solidez al rozamiento

Húmedo: 4, Seco: 4 (ISO 105 - X12:2002)

#### Limpieza

Lavable hasta 60°C. Limpiar con aspiradora frecuentemente. Bien lavar con un paño húmedo o con un champú apropiado para tapicería.

\* Testé selon la norme BS EN 14465. Veuillez noter que la performance du joint dépend de sa construction ainsi que de l'aiguille et du type de fil utilisés.

**Remarque:** une variation de couleurs peut provenir (commerciallement tolérable). Nous réservons le droit de changer les spécifications techniques sans préavis. Les Droits de Conception non-enregistrés et les droits d'auteur de tous les motifs sont la propriétés exclusives de Camira Fabrics Limited.

**Nota:** las variaciones de lote a lote en la sombra se puede producir dentro de tolerancias comerciales. Nos reservamos el derecho a efectuar modificaciones técnicas sin previo aviso. Los derechos sobre los diseños no registrados y los derechos de autor en todos los diseños son propiedad exclusiva de Camira Fabrics Limited.

# camira

[www.camirafabrics.com](http://www.camirafabrics.com)

style with substance

# Xtreme



Task seating



Cigarette & Match



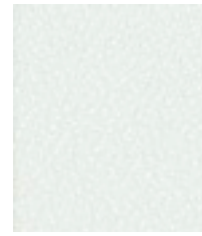
Crib 5 / M1 / B1



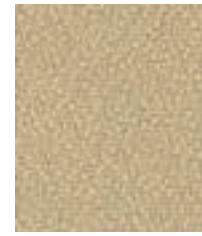
Environmental



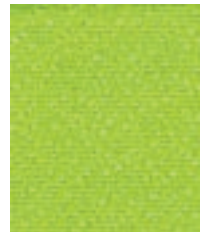
Year guarantee  
8 hour use



Adobo  
YS165



Manado  
YS166



Madura  
YS156



Apple  
YS096



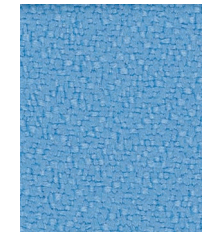
Orchilla  
YS167



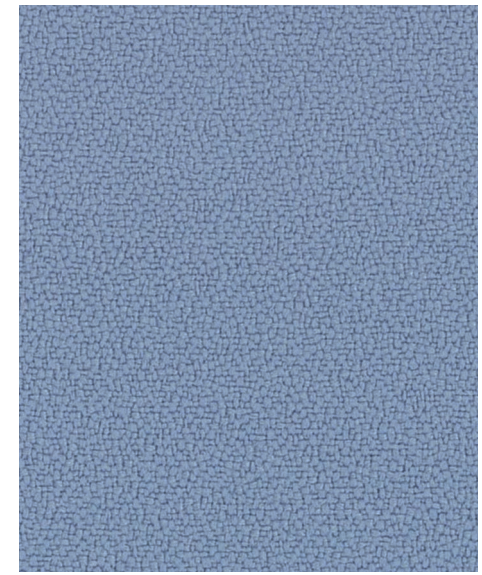
Rum  
YS173



Arecibo  
YS174



Marianna  
YS157



Steel  
YS095



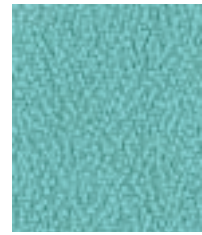
Aruba  
YS108



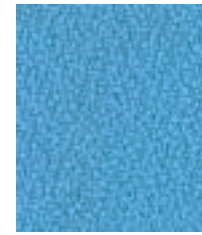
Solano  
YS072



Tortuga  
YS168



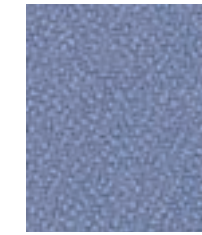
Campeche  
YS074



Parasol  
YS073



Slip  
YS094



Anguilla  
YS169



Sandstorm  
YS071



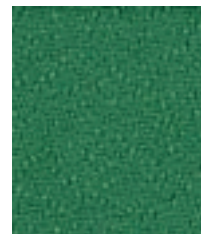
Bridgetown  
YS102



Belize  
YS105



Lobster  
YS076



Lombok  
YS159



Tonga  
YS160



Buru  
YS170



Blizzard  
YS081



Bluebell  
YS097



Martinique  
YS004



Mauve  
YS069



Nougat  
YS091



Diablo  
YS101



Panama  
YS079



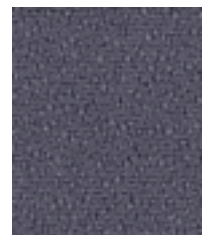
Jamaica  
YS027



Windjammer  
YS047



Montserrat  
YS011



Osumi  
YS171



Krabi  
YS141



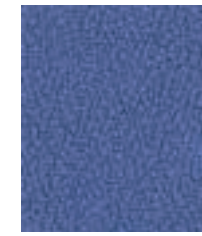
Honeymoon  
YS035



Scuba  
YS082



Curacao  
YS005



Bluefield  
YS021



Nicobar  
YS158



Calypso  
YS106



Tokara  
YS136



Appledore  
YS077



Twister  
YS083



Sombrero  
YS046



Ocean  
YS100



Navassa  
YS162



Cayman  
YS024



Andaman  
YS144



Bounty  
YS086



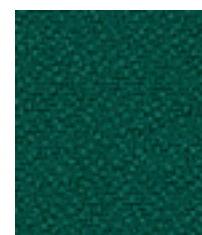
Tarot  
YS084



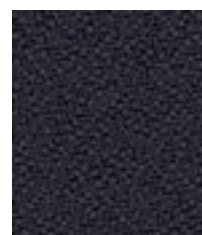
Tobago  
YS030



Taboo  
YS045



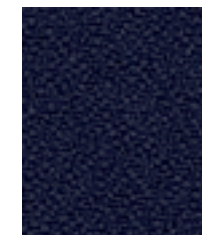
Flores  
YS161



Bonaire  
YS172



Padang  
YS145



Leeward  
YS164



Arawak  
YS016



Costa  
YS026



Havana  
YS009