

Product Specification

Design: 'Play'

Design

Visually distinctive, uncluttered and obvious, Play is an exciting, stand alone, modular desking system, which is well engineered and offers the highest level of design and detailing.

Features

With a minimalist under frame, Play's most distinguishing feature is the splayed leg structure which provides a strong platform from which to work. The legs can be fixed or height adjustable.

A selection of managerial, conference and meeting tables offer greater flexibility to the complete solution.

Applications

This stand alone desking system is ideal for contemporary office spaces. The specially designed integrated, lockable storage bin makes the range suitable for hot desking environments or call centres, wherever there is a need for individuals to share communal desks.

Finishes

Play can be finished in an array of MFC's and veneers – see the full list below, with corresponding codes and complementary metalwork finish.

Code Title

AT	Autumn MFC
EO	English Oak MFC
MP	Maple MFC
BH	Beech MFC
WH	White MFC
HD	Highland Oak MFC
RO	Reformed Oak
RN	Reformed Natural Cherry
RP	Reformed Maple
RW	Reformed Walnut
RB	Reformed Beech

Top/Fronts

Autumn MFC
English Oak MFC
Maple MFC
Beech MFC
White MFC
Highland Oak MFC
Reformed Veneer – Light Oak
Reformed Veneer – Natural Cherry
Reformed Veneer – Maple
Reformed Veneer – Walnut
Reformed Veneer – Beech

Metalwork

Silver RAL 9006
Silver RAL 9006
Silver RAL 9006
Silver RAL 9006
Silver RAL 9006
Silver RAL 9006
Silver RAL 9006
Silver RAL 9006
Silver RAL 9006
Silver RAL 9006
Silver RAL 9006
Silver RAL 9006

Pedestal Finishes

MFC Stone Contrast

BHS	Beech
HDS	Highland Oak
MPS	Maple
WHS	White
ALS	Silver
EOS	English Oak

MFC Silver Contrast

BHA	Beech
HDA	Highland Oak
MPA	Maple
WHA	White
EOA	English Oak

Reformed Veneer Stone contrast

ROS	Oak
RNS	Natural Cherry
RPS	Maple
RWS	Walnut
RBS	Beech

Reformed Veneer Silver contrast

ROA	Oak
RNA	Natural Cherry
RPA	Maple
RWA	Walnut
RBA	Beech

Fabrics

Class A:	Interface – Cara
Class B:	Interface – Lucia, Astra, Screen
Class C:	Interface – Streetwise, Metallation
Class D:	Fabric details on application

Glazed Screen Colours

OB	Opaque Blue
OC	Opaque Crystal
OG	Opaque Green
OW	Opaque White

Beam

- Twin rolled steel rail construction – designed solely for Play, this provides rigidity to the desk, used in conjunction with aluminium end castings which carry the legs.
- Rails connected to the desk via clip on moulding which also connects the top to the rails.



Play Structure with Legs



Play Structure



Side Castings



Casting For 120° Corner



Casting Set For Adjoining Top

Legs

- Square tubular steel construction
- Unhanded
- Single bolt fixing to underframe
- Taper wedge fixing
- Optional height adjustable – 200mm (680mm – 880mm)
- Push button height adjustment mechanism
- 730mm high as standard



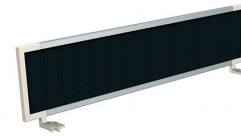
Standard Leg



Height Adjustable Leg

Screens

- Aluminium extruded rail with rigid plastic moulded end
- 2 screen types, fabric & acrylic
- 6mm covered high density fibre board
- Pinnable
- 5mm thick acrylic option available



Fabric Screen



Acrylic Screen

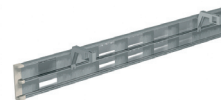
Add on Cable Management

HORIZONTAL

- Optional add-on aluminium extruded horizontal cable manager
- Plastic extruded cable manager covers enable wires (power/data) to be located and held in place. No tools required for fitting data and power cables
- Twin segregation for power and data. Compliant with BS6396
- Connects direct to under rail and can be fitted prior to application of top
- Integral provision to earth power to system
- Optional cable dump which connects directly to the cable manager
- Optional wire basket available



Cable Basket



Horizontal Cable Manager



Horizontal Cable Tray

VERTICAL

- Optional vertical cable riser
- Twin segregation for power/data



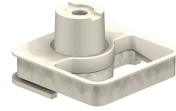
Vertical Riser

Utility Port

- Desk power sockets. Multiple configurations including 2 power/2 data or 2 power/1 data/1 telecoms
- Requires a utility port
- Senator designed desk power socket
- Monitor arm connects directly to utility port



Desk Power Socket



Utility Port



Monitor Arm

Worksurfaces

- Finishes – MFC (2mm edging) & veneered MDF (profiled front edge)
- 25mm thick
- Radiused corners all round
- Port holes for cable access included in top



Rectangular Top Pack 800 Deep



Single Wave Top Pack 1000/800 Deep



Rectangular Top Pack 600 Deep



Slimline Wave Top Pack 800/600 Deep



Double Wave Top Pack 1000 Deep



120° Top Pack



Rectangular Top Pack 800 Deep
- with left hand storage bin



Single Wave Top Pack 1000/800 Deep
- with right hand storage bin



Rectangular Top Pack 600 Deep
- with left hand storage bin



Slimline Wave Top Pack 800/600 Deep
- with right hand storage bin



120° Top Pack
- with left hand storage bin



120° Top Pack
- with right hand storage bin



Storage Bin



Rectangular Top Pack
- with central port hole

Desk Under Pedestals

- Mobile pedestal
- Integral drawer handle
- 2 drawer filing or 3 drawer personal
- Inset drawer fronts
- Plastic moulded base and top



Mobile 2
Drawer



Mobile 3
Drawer

Pedestal

- Side pedestal with tambour lid – includes filing capability as standard and integral deep pen tray
- Plastic moulded base
- High – 2 drawer mobile
- High single drawer mobile with tambour lid



Side Pedestal With
Tambour Lid



High Mobile



High Mobile With Tambour

Accessories

- Accessory Screen – clip on, no tools required
- Assorted accessory trays can be hung from screen
- Universal shelf box
- Universal shelf tray
- Pen tray mat
- Binder holder
- Screen mounted pen tray
- Desk accessory – removable lockable storage bin with integral name plate



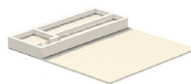
Binder Holder



Screen Mounted
Pen Tray



Universal
Shelf Box



Pen Tray Mat



Universal
Shelf Tray

British Standards

Play is certified to the following standards

BS4875	Part 5, 2001	Strength and stability of office furniture
BSEN527	Part 1, 2000	Office furniture desk and table dimensions
BSEN527	Part 2, 2002	Office furniture desk and table mechanical safety requirements
BSEN527	Part 3, 2003	Office furniture desk and table methods to test for the determination of strength and stability
BS6396	2008	Electrical systems in office furniture and screens
BSEN9241	Part 5, 1999	Ergonomics of design and use of visual display terminals (VDT's) in offices
BS5459	Part 1, 1977	Specification for performance requirements and tests for office furniture, desks and tables